

**DISTECH
CONTROLS™**



CONNECTING OCCUPANTS TO
**INTELLIGENT
BUILDINGS**

ECLYPSE™



OFFICES



THE CORNICHE BUILDING

Lambeth, London, UK



WELLINGTON PALACE

St John's Wood, London, UK



MENNICA LEGACY TOWER

Warsaw, Poland



RAYTEC VISION SPA - NEW HQ

Parma, Italy

THREE KEY OBJECTIVES



EFFICIENT BUILDINGS

Designing eco-friendly buildings



OCCUPANT WELLBEING

Improving the occupants' quality of life and anticipating their needs



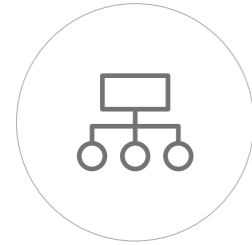
SPACE MANAGEMENT

Controlling your operating costs and optimising your real-estate assets

BUILDINGS UP TO THE CHALLENGES

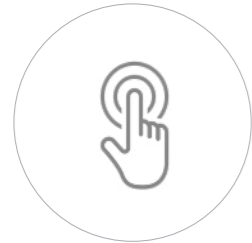
of today and the future via the leading ECLYPSE series

OPEN AND CONNECTED BUILDINGS
THAT ARE READY FOR THE FUTURE



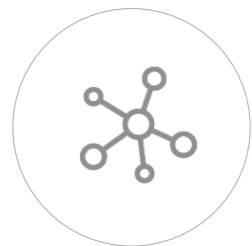
A CONNECTED SOLUTION FOR A MULTITUDE OF INDUSTRIES

- Pool equipment to optimise your investment
- Control your energy costs thanks to a unified system



A UNIQUE OCCUPANT EXPERIENCE

- Control your comfort settings from connected, user-friendly interfaces
- Products with a modern, elegant design that meet your architectural expectations

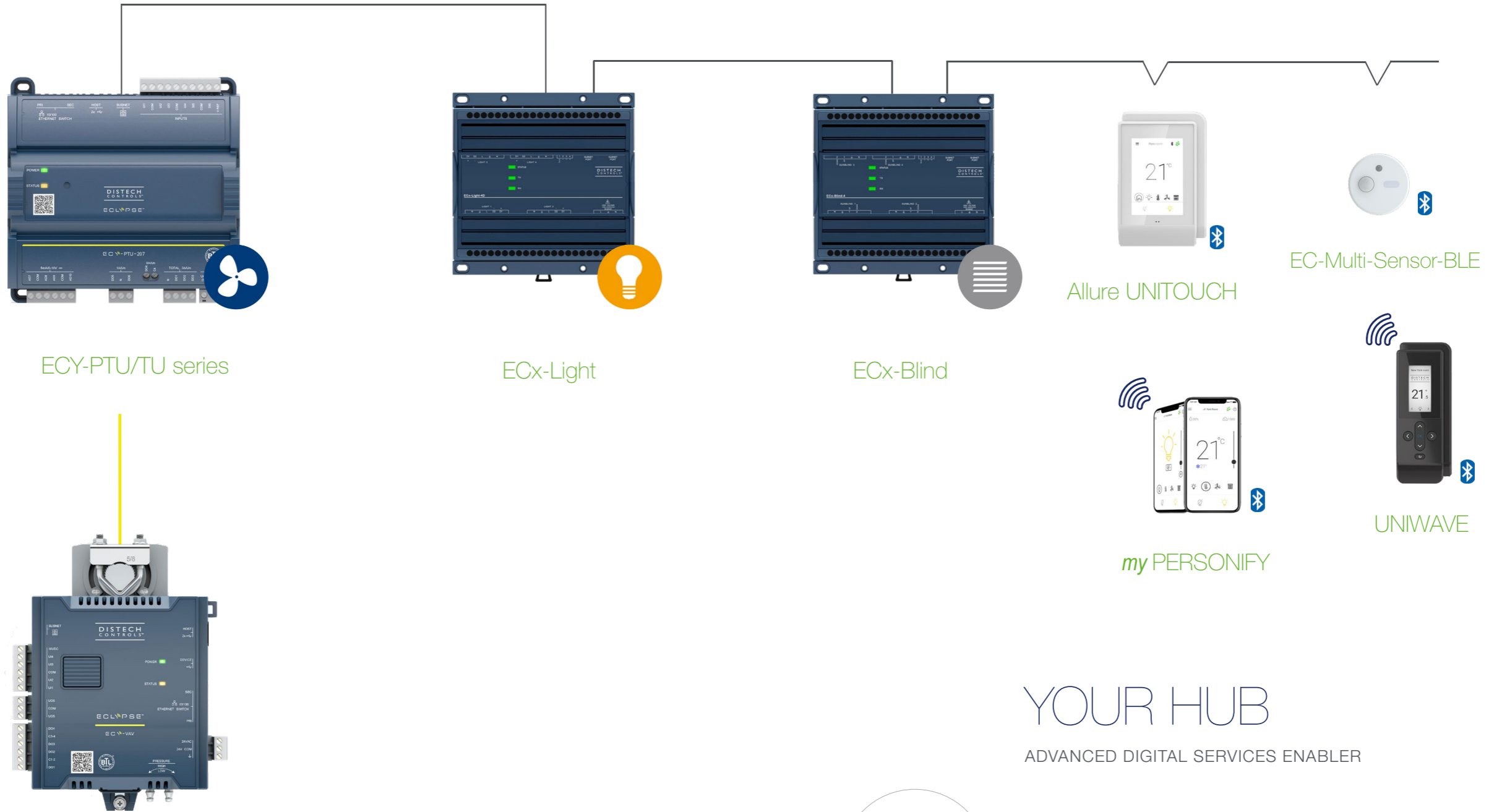


AN OPEN AND UPGRADEABLE SOLUTION

- Flexible buildings that guarantee independence in terms of technological solutions
- Advanced digital services enabler
- Simpler, affordable maintenance

SMART ROOM CONTROL SOLUTION

The control of HVAC room terminal equipment, Lighting, and Shades/Sunblind.



ECY-PTU/TU series

ECx-Light

ECx-Blind

Allure UNITOUCH

EC-Multi-Sensor-BLE

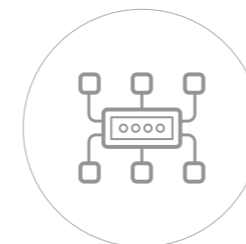
my PERSONIFY

UNIWAVE

ECY-VAV and ECY-VAV-PoE

YOUR HUB

ADVANCED DIGITAL SERVICES ENABLER



- BACnet/IP
- Web services: RESTful API
- Cloud connectivity: Microsoft Azure IoT Hub
- Occupant mobile application: Bluetooth® Low Energy (BLE)

A UNIQUE OCCUPANT EXPERIENCE

ECLYPSE Sky Ecosystem,
Products and solutions using Bluetooth® technology. 

UNIWAVE



Allure UNITOUCH



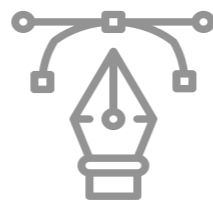
my PERSONIFY



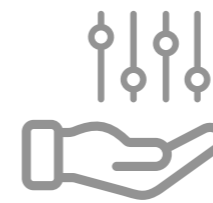
EC-Multi-Sensor-BLE



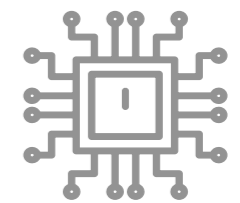
Solutions designed with the occupant in mind



Attractive design



Controllable from your smartphone



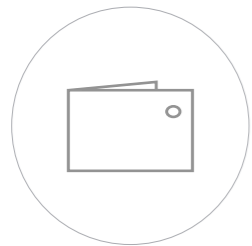
Advanced technologies

A SMART SOLUTION WHICH ANTICIPATES YOUR FUTURE NEEDS



AN OPTIMAL INVESTMENT (CAPEX)

- Ensures data is aggregated to serve the present and future uses
- Easy integration of advanced digital services



OPTIMISED OPERATIONAL COSTS (OPEX)

- A powerful and constantly-evolving platform to support the transformation of uses
- Meets the growing demand for flexible spaces that promote the wellbeing of occupants



DATA OWNERSHIP

- The data remains the property of the contracting authority
- High capacity for on-site analysis



ACCESS A UNIQUE AND DIFFERENTIATED LEVEL OF SERVICES

- Ready 2 Services (R2S)
- Freedom of choice with regards to digital service providers



Connecting people with intelligent building solutions
for better health, better spaces, better efficiencies.

Distech Controls connects people with intelligent building solutions through our forward-thinking technologies and services. We partner with customers to deliver innovative solutions that can provide better health, better spaces, and better efficiencies. Our passion for innovation, quality and sustainability guides our business, which serves multiple market segments through worldwide business divisions, service offices and a superior network of Authorized System Integrators and Distributors. Distech Controls serves several markets around the world through its business divisions, service offices and its network of official integrators and distributors.